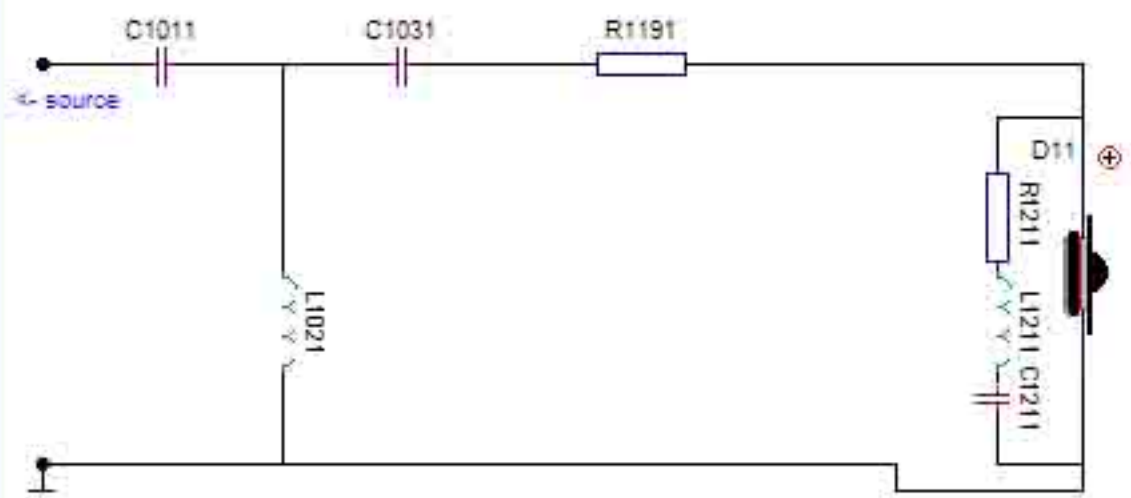


Net 1

- C1011 2.200 uF
- L1021 1.000 mH
- C1031 10.00 uF
- R1191 10.0 ohm
- R1211 10.0 ohm
- C1211 15.00 uF
- L1211 1.800 mH



Driver unit 1 (D11)
 SPL data file : TC120TD5 on 7x12box.txt
 Impedance data file : import\TC120TD5 impedance.txt
 Position (x,y,z) : 0.0,0.0,0.0 mm
 Relative distance : 0.0 mm